

## DESIGN & BUILD

R. Craig Lord is a 2017 Guild Quality Master award winner, dedicated to delivering an exceptional experience.



### News in the Neighborhood

As the cool nights of spring turn to warmer summer days filled with sun and fun, we take a moment to look back on our recent remodels.

John and Amy Constantine are enjoying relaxing in their newly finished basement. A new master bath with curbless shower is completed for Molly Sergi. Kevin Call and Barbara Saunders remodeled three bathrooms in their historic home. Christina and Mike Mackintosh are enjoying the extra space their new basement provides their family. A new powder room for Larry and Nancy Wyatt provides both style and functionality. A new family room is soon to be completed and enjoyed by Jackie and David Cometz.

On the commercial side, CLC Locksmith renovation is completed. And, Mark and Ann Baiada have settled into their company headquarters after a multi-year renovation of a three-story historic home.

*R. Craig Lord Construction Company*

## Project Spotlight

### Local Historic Gem Restored

By Staff



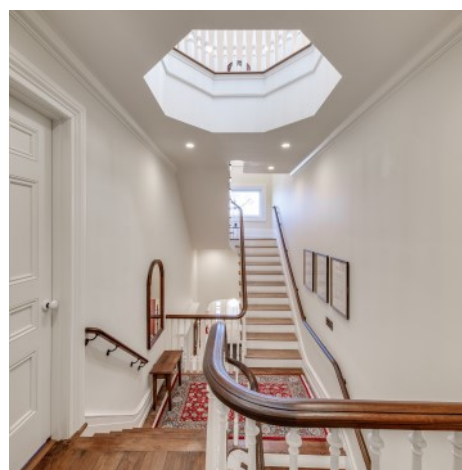
Passion and dedication describe our clients, Mark and Ann Baiada, who undertook a historic rehabilitation of a Moorestown home built in 1858 and, in doing so, preserved a part of the town's history. Their goal was to impeccably and accurately restore the home to its original grandeur while creating a functional work space with a home-like feel for their corporate headquarters for Bayada Home Health Care.

They had selected a three-story Gothic Italianate home on Main Street that needed extensive work and assembled a team which included architects, an interior designer, and R. Craig Lord Construction Company as General Contractor. All involved would agree that it was a unique challenge to create a corporate headquarters in an 1858 home while undertaking a complete interior his-

toric rehabilitation.

Since the building had undergone commercial remodels in the past, two drop ceilings and fake walls covered the original plaster walls and ceilings while segmented floorplans and layers of flooring hid the original layout. The scope of work began with a highly selective demolition, layer by layer, as clues were uncovered and documented of the home's original features. Some of the details discovered included the outline or partial pieces of plaster cornices, ceiling rope trim and medallions, window trim and baseboards, lathe and brick walls, plaster walls, and window sashes. About 20% of the original features remained to restore and the other 80% were to undergo a year-long Historic Architectural Investigation before generating blueprints. The original features were removed to refinish offsite and the house was ultimately gutted entirely to the brick and lathe. Material acquisition was challenging for this historic remodel because most items could not be ordered from a supplier. Materials involved recreating the historic features in the traditional manner by artisans who created custom plaster features and recreated woodwork, spindles and a two-story bannister to match the original first-floor staircase. All new HVAC, Electrical, Plumbing, and Wiring for technology were done to provide modern amenities.

To see the entire completed 16 room renovation and a behind-the-scenes look at the construction, visit our blogs at [www.rcraiglord.com](http://www.rcraiglord.com).



### Design through the Decades

By Craig Lord



In looking back over four decades of remodeling, one thing is for sure the industry is always changing. Trends come and go, some we were glad to see leave only to resurface as "vintage" inspired and others made lasting improvements to how people live. So here they are Craig's Greatest Hits from the Golden Decades 1980-2017 Volume 1 (we hope).

In the eighties, we finally got rid of appliance colors like harvest gold and avocado green replacing them with black and white. This was an improvement in my mind, but I have seen both those colors in recent designs.



The biggest thing that came out of the 80's was Corian. This was a watershed event not because Corian was a great product, but it launched the idea of the solid surface countertop. Today's countertops with all their options all got started with Corian.

Bathrooms took the giant leap forward in the 90's. They got bigger with more square footage and closet space. Unfortunately this trend was marred by the advent of the whirlpool tub. A device that cost a lot of money and was basically used to house plants. People wanted them because they increased resale value, never a good idea.

The decade of 2000 to 2010 brought the green movement to our industry. Great new products like bamboo and cork floors, LED lighting, and recycled glass countertops came to market. Paints became safer, tougher



and more vibrant during this period. It is now possible to paint anything. This decade also gave birth to the DIY TV shows that regularly performed miracles at little or no cost. I cringe every time I see someone swing a sledge hammer indoors.

Technology has ruled our current decade. Remote control of everything is now available. Why?

Trends are always changing, but one thing holds true—Communication, Craftsmanship, and Quality never get old. As we continue through the decades, we stand ready to help you with all your remodeling needs.

## News & Events

### GuildMaster Award for Service Excellence

R. Craig Lord Construction Company has received the GuildQuality GuildMaster Award for 2017, making it our tenth consecutive year as an award winner. "We're very excited to receive this recognition," said Craig Lord of R. Craig Lord Construction Company, "particularly because it is based upon actual client surveys of our projects. Since 1980 we have worked hard every day to deliver a high level of client service. It's gratifying to have them recognize our efforts to deliver those values in every project we do."



### Chrysalis Award

R. Craig Lord Construction Company has won the prestigious National Award national remodeling award. "To win a national award in this highly competitive category is quite an achievement," says Ken Kanline, Director of the Awards.



### New Jersey Historic Preservation Award

Mark and Ann Baiada, along with the team, were recognized by the State of NJ with the Historic Preservation Award. The project was recognized for the importance of downtown revitalization and setting the highest standards in demonstrating how historic building can work for modern office facilities. (Photo left from award ceremony.)

### R. Craig Lord Construction Sponsors Moorestown Friends School Fundraiser

We were pleased to continue our support for Moorestown Friends School by sponsoring their Parent Council Auction "A Night Among The Stars."

### Moorestown Day June 3rd 2017 on Main Street Moorestown, NJ

Stop by and visit us during Moorestown Day! We will be debuting our new customized tent in front of 1 West Main Street.

### Mount Laurel Fall Festival September 16, 2017 at Laurel Acres Park

Come enjoy this family fun event and visit our tent while you are there!

### Carpenter's Corner

Our carpenters are busy onsite throughout Burlington and Camden County; but they wanted to provide you with this reminder about **Stone Countertops**.

Make sure your granite and marble countertops are sealed on a regular basis. Over time, the seal is worn away with use. To check if the granite is sealed, leave a few drops of water on the surface. If it beads up, you have a secure seal. If after a few minutes, the moisture has soaked into the stone, it is time to reseal the stone.

As a general rule, we recommend resealing your stone countertop at least once a year. If you have any questions about sealing your countertop, just give us a call at (856) 235-4237.

